




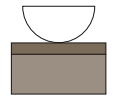
# MATERIAL UND FARBEN MATERIAUX ET COULEURS MATERIALI E COLORI

LOOSLI

2025

**Kunstharz Normkollektion**  
Stratifié selon collection  
Laminato in base alla collezione

Struktur, Structure décorative, Struttura decorativa   
Holzdekor, Décor bois, Decorazione legno   
Kunstharz matt, Résine synthétique mate, Resina sintetica opaca 



Arktisweiss 641  
blanc arctic  
bianco artide



Tussan 918  
tussan  
tussan



Pistacia 414  
pistacia  
pistacia



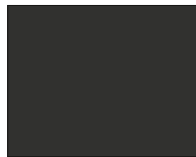
Norio 422  
norio  
norio



Sepia 919  
sépia  
sepia



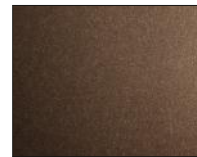
Olea 413  
olea  
olea



Carbon 410  
carbon  
carbon



Avellana 415  
avellana  
avellana



Terra 775  
terra  
terra



Umbra 956  
umbra  
umbra



Castanea 412  
castanea  
casatanea



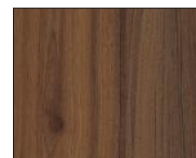
Silentium 420  
silentium  
silentium



Argento 418  
argento  
argento



Platino 419  
platino  
platino



Eleganza 405  
eleganza  
eleganza



Silberulme 837  
orme d'argent  
olmo argento



Oregoneiche 407  
chêne d'Oregon  
rovere Oregon



Graphitesche 409  
frêne graphite  
frassino graphite



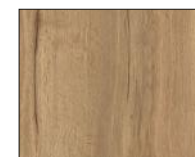
Cedrus 423  
cedrus  
cedrus



Feldulme 845  
orme champêtre  
olmo campestre



Eleganza 462  
eleganza  
eleganza



Vermonteiche 832  
chêne vermont  
rovere vermont



Artuseiche 404  
chêne d'Artus  
rovere di Artus



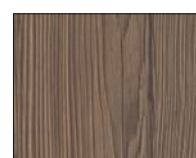
Windsoreiche 416  
chêne de Windsor  
rovere di Windsor



Prestige 406  
prestige  
prestige



Alabamaeiche 824  
chêne Alabama  
rovere Alabama



Suvretta 833  
suvretta  
suvretta



Cembra 421  
cembra  
cembra



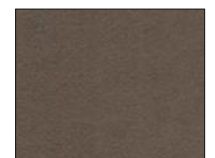
Aniq Petra 436  
aniq petra  
aniq petra



Aniq Neve 439  
aniq neve  
aniq neve



Aniq Gris 437  
aniq gris  
aniq gris



Aniq Bronze 438  
aniq bronze  
aniq bronze

## Kunstharz "Speciale"

Stratifié selon collection "Speciale"

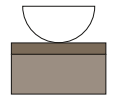
Laminato in base alla collezione "Speciale"



Kunstharz Speciale  
= Kunstharz Norm + 40%  
Stratifié Speciale  
= Stratifié standard + 40%  
Laminato Speciale  
= Laminato standard + 40%



Kunstharz Speciale  
= Kunstharz Norm + 30%  
Stratifié Speciale  
= Stratifié standard + 30%  
Laminato Speciale  
= Laminato standard + 30%



Velvet Snow  
Velvet Snow  
Velvet Snow



Velvet Cotton  
Velvet Cotton  
Velvet Cotton



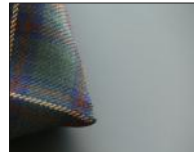
Velvet Cameron  
Velvet Cameron  
Velvet Cameron



Velvet Coconino  
Velvet Coconino  
Velvet Coconino



Velvet Linen  
Velvet Linen  
Velvet Linen



Velvet Sinclair  
Velvet Sinclair  
Velvet Sinclair



Velvet Shell  
Velvet Shell  
Velvet Shell



Velvet Volcanic  
Velvet Volcanic  
Velvet Volcanic



Velvet Campbell  
Velvet Campbell  
Velvet Campbell



Velvet Boulder  
Velvet Boulder  
Velvet Boulder



Velvet Adamant  
Velvet Adamant  
Velvet Adamant



Velvet Langatun  
Velvet Langatun  
Velvet Langatun



Velvet Brooklyn  
Velvet Brooklyn  
Velvet Brooklyn



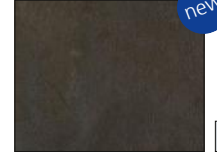
Velvet Black  
Velvet Black  
Velvet Black



Struktura Sabbioso  
Struktura Sabbioso  
Struktura Sabbioso



Struktura Partio  
Struktura Partio  
Struktura Partio



Struktura Ominoa  
Struktura Ominoa  
Struktura Ominoa



Struktura Biancu  
Struktura Biancu  
Struktura Biancu



Struktura Nebbia  
Struktura Nebbia  
Struktura Nebbia



Struktura Neru  
Struktura Neru  
Struktura Neru



Struktura Fuma  
Struktura Fuma  
Struktura Fuma



Struktura Campana  
Struktura Campana  
Struktura Campana



Struktura Natura  
Struktura Natura  
Struktura Natura



Struktura Eclipse  
Struktura Eclipse  
Struktura Eclipse



Struktura Rock  
Struktura Rock  
Struktura Rock



**Vetro**  
Vetro  
Vetro



Bianco  
bianco  
bianco



Bronze  
bronze  
bronze



Anthracite  
anthracite  
antracite



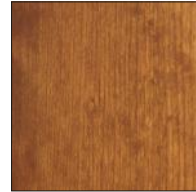
Glanz Schwarz  
brillant noir  
brillante nero

Sonderfarbe + Fr. 478.00  
couleur spéciale + Fr. 478.00  
colore speciale + Fr. 478.00

**Wood schlicht**  
Wood *sobre*  
Wood *sobrio*



Kirschbaum  
cerisier  
ciliegio



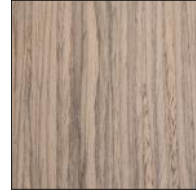
Cherry  
cherry  
cherry



Eiche Schwarz  
chêne noir  
rovere nero



Eiche Weiss TF  
chêne blanc TF  
rovere bianco TF



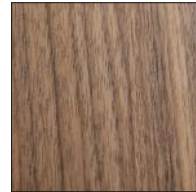
Eiche Antik TF  
chêne antique TF  
rovere antico



Nuo Oak  
Nuo Oak  
Nuo Oak



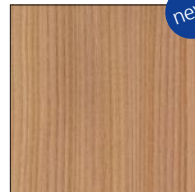
Eiche natur  
chêne naturel  
rovere naturale



Nussbaum  
noyer  
noce



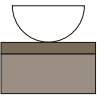
Nuo Walnut  
Nuo Walnut  
Nuo Walnut



Ulme  
orme  
olmo

new

**Wood lebhaft**  
Wood *vif*  
Wood *vivo*



Landhausfichte  
sapin de la bastide  
abete di casolare



Altholz Fichte (nur UB)  
vieux bois sapin (élé. inf.)  
legno vecchio abete  
(solo elem. inferiore)



Vogeseneiche  
chêne des vosges  
rovere delle vosgi



Rustica Wildeiche  
Rustique chêne sauvage  
Rustica rovere salvatico



Rustica Otara  
Rustique otara  
Rustica otara

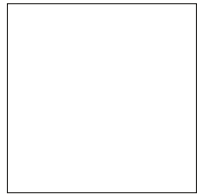


Rustica Fumato  
Rustique fumato  
Rustica fumato

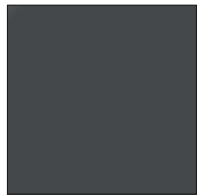


Kerseiche  
chêne keros  
rovere keros

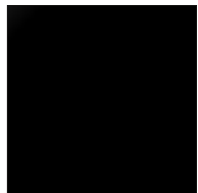
**Kunstharz-Glanz**  
Stratifié-brillant  
Laminato-brillante



Weiss 931  
blanc  
bianco



Graphit 923  
graphite  
grafite

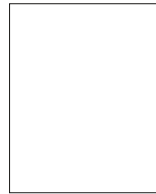


Schwarz 929  
noir  
nero

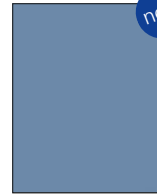
**Strukturlack / Schleiflack**  
laqué structurée / laqué mat  
lacca di struttura / lacca opaca



Arktisweiss  
blanc arctic  
bianco artide



Weiss (RAL 9016)  
blanc (RAL 9016)  
bianco (RAL 9016)



Alcedo  
Alcedo  
Alcedo



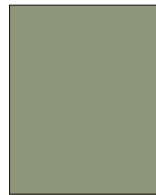
Taupe  
Taupe  
Taupe



Terracotta  
Terracotta  
Terracotta



Armonia  
Armonia  
Armonia



Matisse  
Matisse  
Matisse



Rubens  
Rubens  
Rubens



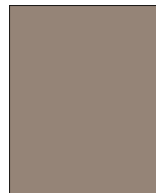
Ice  
Ice  
Ice



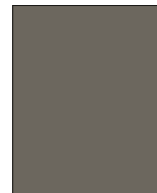
Baltic  
Baltic  
Baltic



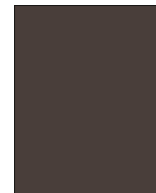
Tuscan  
Tuscan  
Tuscan



Sepia  
Sepia  
Sepia



Umbr  
Umbr  
Umbr



Nativo  
Nativo  
Nativo



Corallium  
Corallium  
Corallium



Agape  
Agape  
Agape



Divina  
Divina  
Divina



Meridies  
Meridies  
Meridies

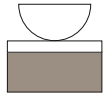


Silentium  
Silentium  
Silentium



Schwarz (RAL 9005)  
noir (RAL 9005)  
nero (RAL 9005)

**Hochglanzlack**  
laqué brillant  
lacca brillante



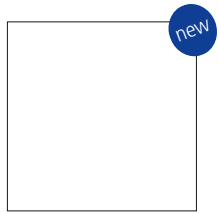
Weiss (RAL 9016)  
blanc (RAL 9016)  
bianco (RAL 9016)



Schwarz (RAL 9005)  
noir (RAL 9005)  
nero (RAL 9005)

Sonderfarbe + Fr. 302.00  
couleur spéciale + Fr. 302.00  
colore speciale + Fr. 302.00

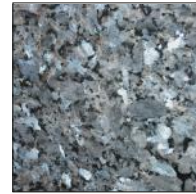
**Vollkern**  
Stratifié compact  
Laminato compatto



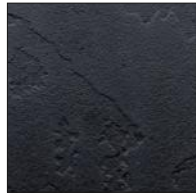
Mykonos 904  
Mykonos  
Mykonos



Pedra 819  
pedra  
pedra



Chara 827  
chara  
chara



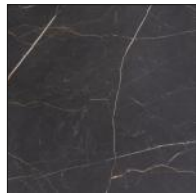
Arbela 823  
arbela  
arbela



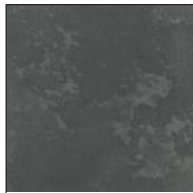
Onix 820  
onix  
onix



Maluhia 825  
maluhia  
maluhia

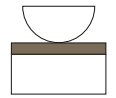


Aloha 826  
aloha  
aloha

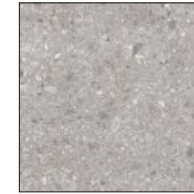


Bato 980  
bato  
bato

**Ceramica**  
Ceramica  
Ceramica



Colonnata (glänzend)  
Colonnata (brillant)  
Colonnata (lucido)



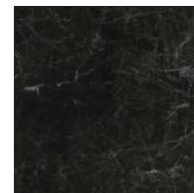
Meteora (matt)  
Meteora (mat)  
Meteora (opaco)



Noseta (matt)  
Noseta (mat)  
Noseta (opaco)



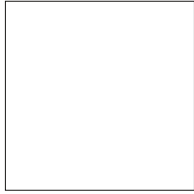
Venezia (matt)  
Venezia (mat)  
Venezia (opaco)



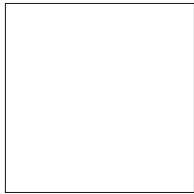
Elea (glänzend)  
Elea (brillant)  
Elea (lucido)

## Mineralwerkstoff

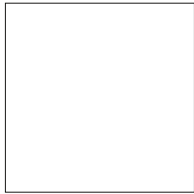
Solid surface  
Solid surface



Glacier White  
Glacier White  
Glacier White



Avian White  
Avian White  
Avian White



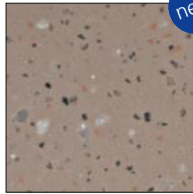
Tristan White  
Tristan White  
Tristan White



Dune Prima  
Dune Prima  
Dune Prima



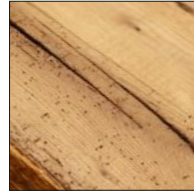
Avian White Zoe  
Avian White Zoe  
Avian White Zoe



Avian Cliff  
Avian Cliff  
Avian Cliff

## Massivholz

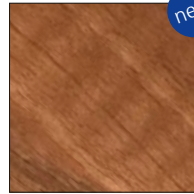
Bois massif  
Legno massiccio



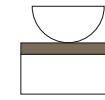
Domuseiche  
chêne domus  
rovere domus



Asteiche  
chêne nouveau  
rovere nodoso

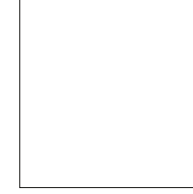


Nussbaum  
noyer  
noce



## Wandverkleidung Vipanel

Revêtement mural Vipanel  
Rivestimenti a parete Vipanel



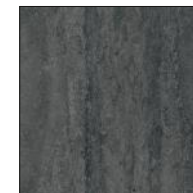
Uni-Signalweiss  
uni-blanc de sécurité  
uni-bianco segnale



Beton-Anthrazit  
béton-anthracite  
cemento-anthracite



Stein-Beige  
pierre-beige  
pietra-beige

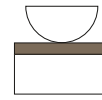


Stein-Schwarz  
pierre-noire  
pietra-nero



Metall-Oxyd  
oxyde-métallique  
ossido di metallo

**Granit**  
granite  
granito



**Legende**  
légende  
leggenda



new

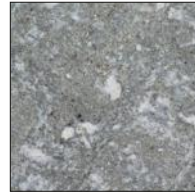
Taj Mahal  
Taj Mahal  
Taj Mahal



Via Lattea  
Via Lattea  
Via Lattea



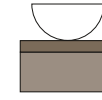
Nero Assoluto  
Nero Assoluto  
Nero Assoluto



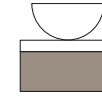
San Bernardino Silver  
San Bernardino Silver  
San Bernardino Silver



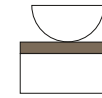
Andeer  
Andeer  
Andeer



Abdeckungs-, Korpus- und Frontfarben  
Materiaux pour les tables de lavabo,  
corps et les faces  
Materiali per piano d'appoggio, corpo e fronte



Korpus und Frontfarben  
Materiaux pour le corps et les faces  
Materiali per il corpo e il facce



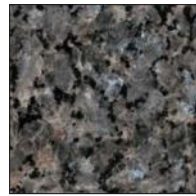
Abdeckungsfarben  
Materiaux pour les tables de lavabo  
Materiali per piano d'appoggio



Paradiso Bash  
Paradiso Bash  
Paradiso Bash



Makuma Black  
Makuma Black  
Makuma Black



Labrador hell  
Labrador claire  
Labrador chiaro



Labrador dunkel  
Labrador foncé  
Labrador scuro



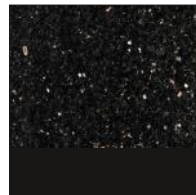
Onsernone dunkel  
Onsernone foncé  
Onsernone scuro



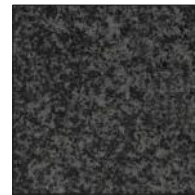
Azul Noche  
Azul Noche  
Azul Noche



Blue in the Night  
Blue in the Night  
Blue in the Night



Galaxy Black  
Galaxy Black  
Galaxy Black



Nero Africa  
Nero Africa  
Nero Africa



Nero Assoluto geflammt, gebürstet  
Nero Assoluto flammé, brossé  
Nero Assoluto fiammeggiare, spazz.



Kunsthartz Speciale  
= Kunsthartz Norm + 30%  
Stratifïé Speciale  
= Stratifïé standard + 30%  
Laminato Speciale  
= Laminato standard + 30%



Kunsthartz Speciale  
= Kunsthartz Norm + 40%  
Stratifïé Speciale  
= Stratifïé standard + 40%  
Laminato Speciale  
= Laminato standard + 40%



#### Hinweis Farbauswahl:

Farben wirken in einem Dokument nie gleich wie in der Realität. Wählen Sie nie nach Prospekt, Internet oder PDF eine Farbe aus. Bitte entscheiden Sie sich nur anhand eines Originalmusters für Ihre Wunschfarbe. Die Muster der Korpus - und Abdeckungsfarben finden Sie in unserem Musterwagen. Von den Kunstharzfarben gibt es bei unseren Grosshandelspartnern 10 x 10 cm grosse Muster, die Sie mit nach Hause nehmen dürfen.

#### Remarque sélection des couleurs:

Les couleurs dans un document ou en réalité ne font jamais le même effet. Ne choisissez jamais une couleur selon un prospectus, selon internet ou fichier pdf. Veuillez décider pour votre couleur désirée uniquement sur la base d'un échantillon original. Les échantillons pour les corps des meubles ainsi que pour les tables de lavabo vous trouvez dans notre présentoir chez nos partenaires. Pour les couleurs en stratifié il y a également des échantillons 10 x 10 cm que vous pouvez emporter.

#### Avviso selezione dei colori:

I colori non sono mai uguali in un documento come nella realtà. Non scegliete mai un colore da una brochure, da Internet o da un PDF. Decidete il colore desiderato solo sulla base di un campione originale. Potete trovare campioni di colori per mobili nel nostro carrello dei campioni. I nostri partner all'ingrosso dispongono di campioni di 10 x 10 cm dei colori in resina sintetica che potete portare a casa.

Loosli Badmöbel AG  
Gewerbstrasse 4954  
Wyssachen  
T. +41 62 957 10 40  
info@loosli.swiss  
www.loosli.swiss

